

KromaPolish™ System

Deep Penetrating Lithium Polishable Color System



383 Canterbury Road Surrey Hills 3127

TEL: 61 3 9836 4488

SALES / TECH SUPPORT: 0411 248 486

www.sealsourceaustralia.com

LEED® EQ Credit 4.1: Low-Emitting Materials: Adhesives & Sealants

TECHNICAL DATA SHEET

PRODUCT DESCRIPTION

KromaPolish™ is a polishable concrete-coloring material that provides the benefits of a penetrating hardener/densifier in addition to superior resistance to abrasion and dusting. When sealed with **Harden X™** and finished with **DuraGloss™** as recommended, the **KromaPolish™** system creates a durable, light-reflective surface that is easy to clean and maintain—dramatically reducing maintenance costs and downtime. The unique design and revolutionary protection of the **KromaPolish™** system outlasts any product of its kind in the industry.

COLORS

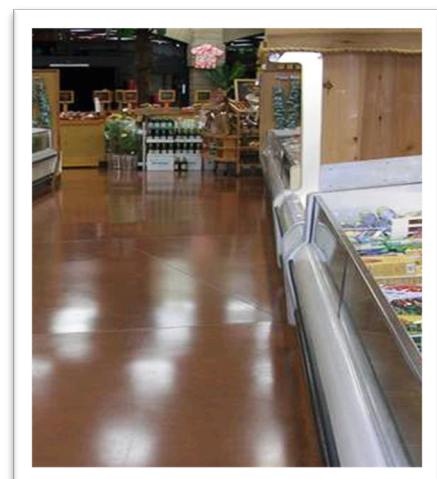
KromaPolish™ is available in twelve standard, in-stock colors. (Custom colors are available upon request.) Please understand that the colors portrayed in our product literature are the closest representation possible, however color may vary depending on the condition of the concrete being treated. We recommend the application of a physical sample prior to treating the entire surface.

USES

The **KromaPolish™** system is designed for interior use only and may be used in virtually any interior environment where a colored surface is desired, such as retail stores, grocery chains, restaurants, hotels, convention centers, sports & entertainment venues, office buildings, schools, manufacturing facilities, showrooms, transportation terminals.

ADVANTAGES

- Polishable
- Deep Penetration
- Light-Reflective
- Increases resistance to stains, abrasion, and dusting
- Vibrant Colors - may be blended for a mottling effect
- Fast-Drying
- Durable



- Reduces maintenance costs and downtime
- Meets and Exceeds OSHA and ADA COF

PHYSICAL PROPERTIES

Form:	Water-like, colored liquid
Specific Gravity:	1.0
pH Level:	7.0
Flash Point:	None
VOC Content:	< 10 gms/L
Freeze Point:	0° C (32°F)
Depth of Surface Penetration:	2-8mm

PACKAGING

- 208 Liter (55 Gallon) Drums (drum containers are filled by weight, volume is closely approximate)
- 20 Liter (5 Gallon) Pails

MIXING

KromaPolish™ is a single-component product. Prior to use, mechanically stir for 5-10 minutes.

APPLICATION METHOD/COVERAGE RATE

Please see separate application instruction document for complete application information.

A minimum of two coats of KromaPolish™ should be applied by a low pressure sprayer, airless sprayer; roller; or polyester microfiber pad at these approximate rates:

Spray Method	10 -15 m ² /liter (400-600 sq/ft per gallon)
Roller/Pad Method	20-25 m ² /liter (800-1000 sq/ft per gallon)

SHELF LIFE

KromaPolish™ may be stored for up to six months in original, unopened factory containers under normal storage conditions of 13° – 35° C (55°F - 95°F).

SAFETY

- Read Material Safety Data Sheet before using
- Keep out of reach of children
- Protect from freezing
- Wear safety glasses and rubber gloves
- Do not apply to soft metals
- Do not apply to glass

WARRANTY

SealSource® International LLC, will refund the price of or replace, at its election, product it finds to be defective provided the product has been used properly. Except as expressly stated above, the Company makes no warranty of merchantability and no warranty of fitness for any particular purpose, nor does it make any warranty, expressed or implied, of any nature whatsoever with respect to the product or its use. In no event shall the

company be liable for delay caused by defects, for loss of use, for indirect, special or consequential damages, or for any charges or expenses of any nature incurred without its written consent.